

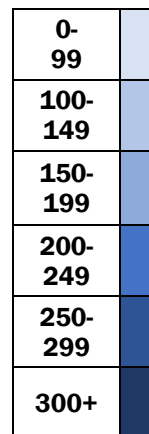
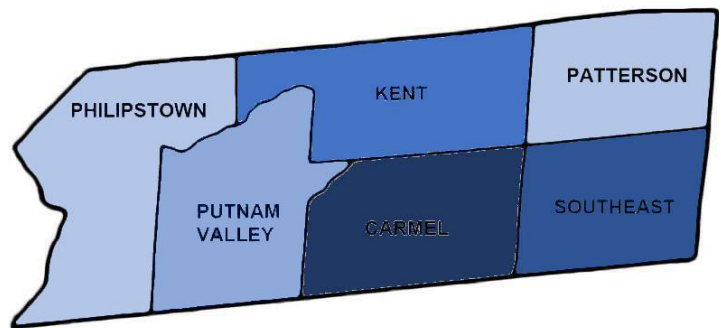
PUTNAM COUNTY COVID-19 COMMUNITY IMPACT DASHBOARD

DATA AS OF: Thursday, May 21, 2020 | LAST UPDATED: Friday, May 22, 2020 (Close of Business) | NEXT DASHBOARD: Tuesday, May 26, 2020

Confirmed Cases

1385

*Cumulative Count of All Cases
9 New Cases Added Today



COVID-19 Related 211 Calls

820

3/1/20 - 4/12/20

Confirmed Cases by Gender

53% 47%

Male Female

COVID-19 Related 911 Calls

360

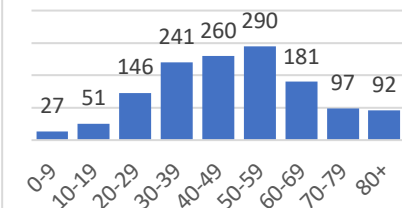
3/1/20 - 5/9/20

Released

1345

*No Longer Isolated/Quarantined
5 Cases Released Today

Town of Carmel 2 New Cases Added Today	438	Town of Philipstown 1 New Case Added Today	115
Town of Kent 1 New Cases Added Today	239	Town of Putnam Valley 1 New Case Added Today	169
Town of Patterson 3 New Cases Added Today	136	Town of Southeast 1 New Case Added Today	288



Active Cases

39

*Confirmed Cases Not Yet Released
4 New Cases Added Today

Hospitalized

13

* at Putnam Hospital
Less 1 Case Today

Deaths (County Residents)

58

*Reported by NYS DOH
No Change

Tests Administered

7,173

*Reported by NYS DOH
156 Tests Administered Today

COMMUNITY RESOURCES

CALL 211
INFORMATION AND
QUESTIONS

CALL 911
LIFE THREATENING
EMERGENCIES ONLY

888-364-3065
NY STATE DOH
COVID-19 HOTLINE

845-808-1390
PUTNAM DEPT.
OF HEALTH

888-667-9262
PUTNAM HOSPITAL
CENTER HOTLINE

or CONTACT YOUR
PRIMARY CARE
PROVIDER

DASHBOARD DEFINITIONS

Confirmed Cases	A cumulative count of all laboratory-confirmed positive cases reported to the Putnam County Department of Health. (Putnam County Residents ONLY)
Released	A cumulative count of all laboratory-confirmed positive cases that meet New York State Department of Health criteria for release from Home Isolation/Quarantine.
Active Cases	A cumulative count of all laboratory-confirmed positive cases that do not meet New York State Department of Health criteria for release from Home Isolation/Quarantine.
Hospitalized	A daily count of laboratory-confirmed positive (COVID-19) patients currently hospitalized at Putnam Hospital as reported by Putnam Hospital.
Deaths (County Residents)	Fatalities of Putnam County Residents caused by or related to COVID-19 as reported by the New York State Department of Health.
Tests Administered	A cumulative count of the number of tests administered as reported by the New York State Department of Health.
COVID-19 Related 211 Calls	All calls to the Putnam County 211 Line related to COVID-19 as reported by 211 staff. Date range is specified.
COVID-19 Related 911 Calls	All incoming 911 calls (to the Putnam County Bureau of Emergency Services, Emergency Communication Center) related to or reporting COVID-19 symptoms/diagnosis/etc.