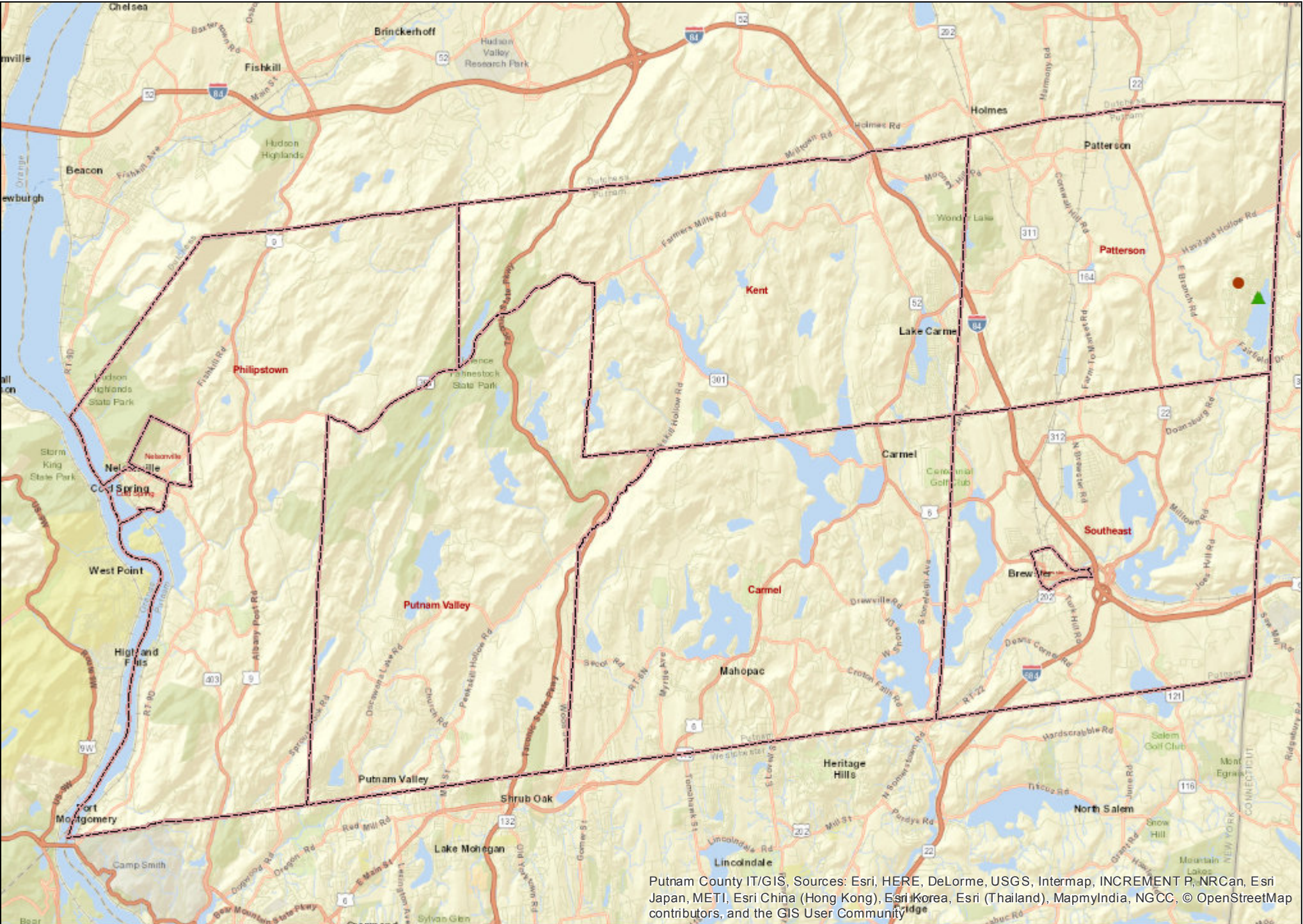


2017-2018 Putnam County Laboratory Confirmed Influenza Cases



Putnam County IT/GIS, Sources: Esri, HERE, DeLorme, USGS, Intermap, INCREMENT P, NRCan, Esri Japan, METI, Esri China (Hong Kong), Esri Korea, Esri (Thailand), MapmyIndia, NGCC, © OpenStreetMap contributors, and the GIS User Community

This includes all cases as of: 10/24/2017

1 Influenza A (Circle) 1 Influenza B (Triangle) and 0 Unspecified (Square)