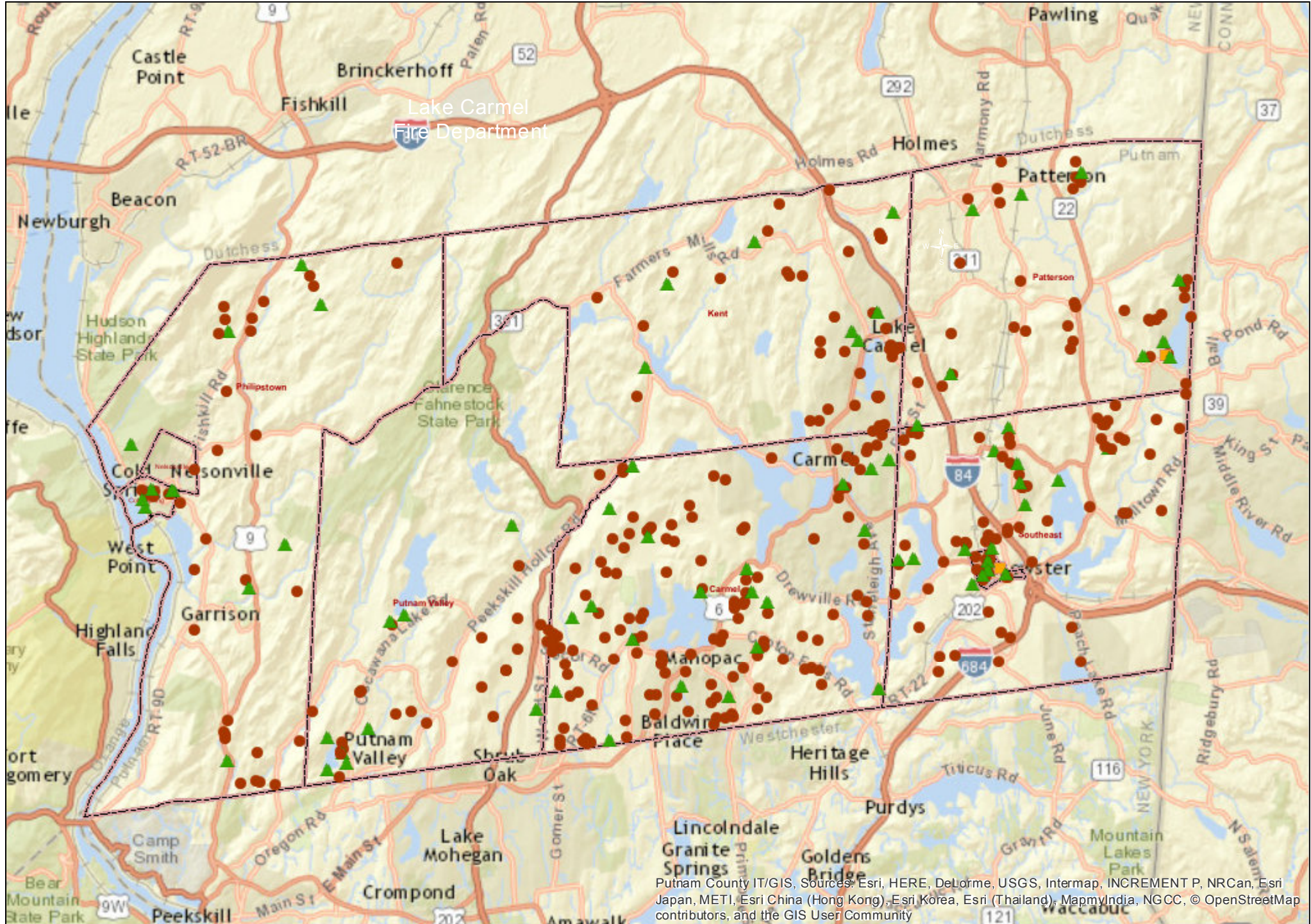


# 2016-2017 Putnam County Confirmed Influenza Cases



Putnam County IT/GIS, Sources: Esri, HERE, DeLorme, USGS, Intermap, INCREMENT P, NRCan, Esri Japan, METI, Esri China (Hong Kong), Esri Korea, Esri (Thailand), MapmIndia, NGCC, © OpenStreetMap contributors, and the GIS User Community

This includes all cases as of: 4/7/2017

329 Influenza A (Circle) 78 Influenza B (Triangle) and 2 Unspecified (Square)