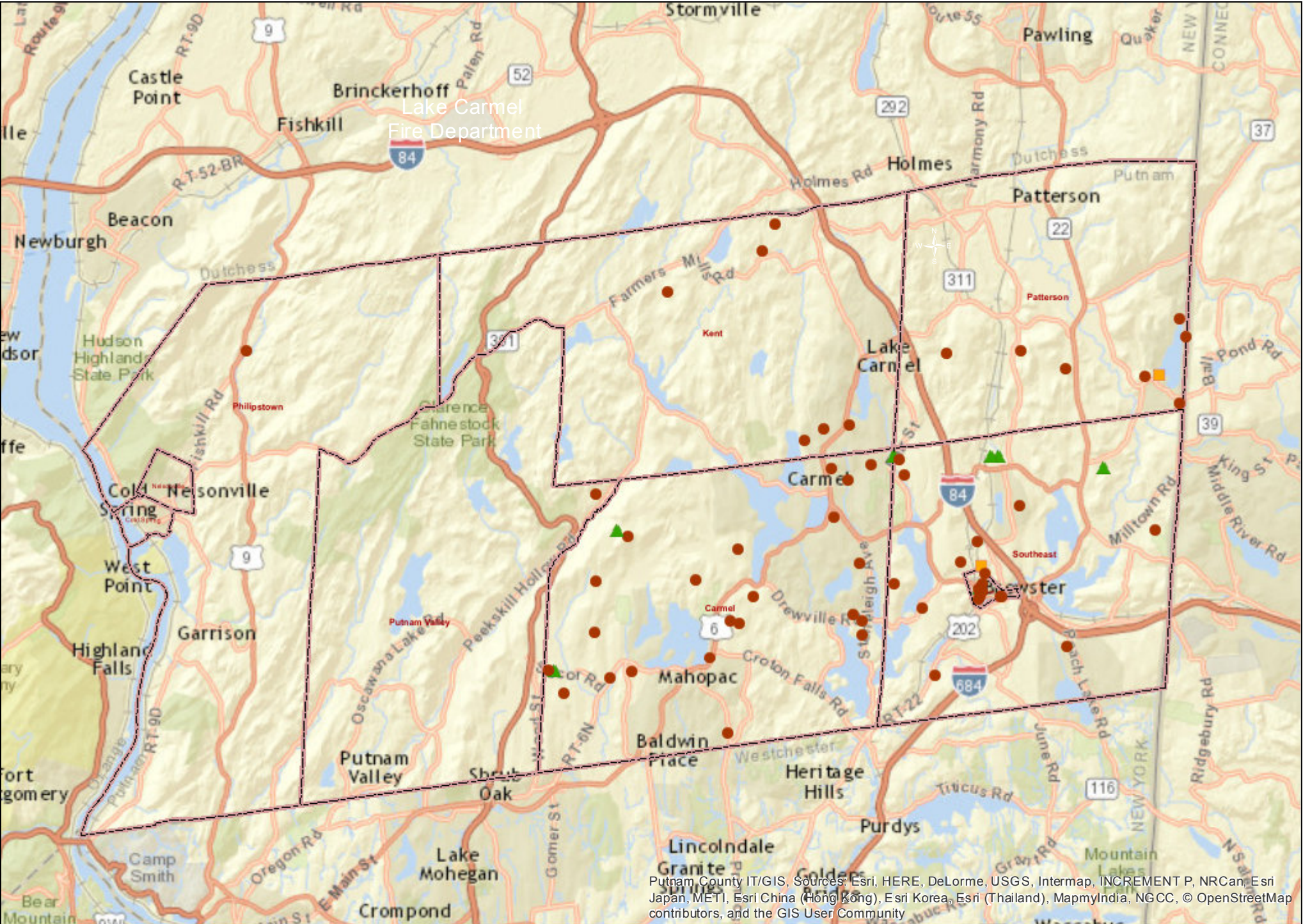


2016-2017 Putnam County Confirmed Influenza Cases



Putnam County IT/GIS, Sources: Esri, HERE, DeLorme, USGS, Intermap, INCREMENT P, NRCan, Esri Japan, METI, Esri China (Hong Kong), Esri Korea, Esri (Thailand), MapmyIndia, NGCC, © OpenStreetMap contributors, and the GIS User Community

This includes all cases as of: 1/7/2017

56 Influenza A (Red Circle), 7 Influenza B (Green Triangle) and 2 Unspecified (Orange Square)